

$\text{♩} = 132$

2

f *sfzp* *f* *f* *sfzp* *f*

14

sfzp *sfzp* *mf* *f* *sfzp* *f*

25

A

mf

To Coda

34

43

f

51

B

mf

61

f *mf*

71

C

14

91

f

99 *rall.*

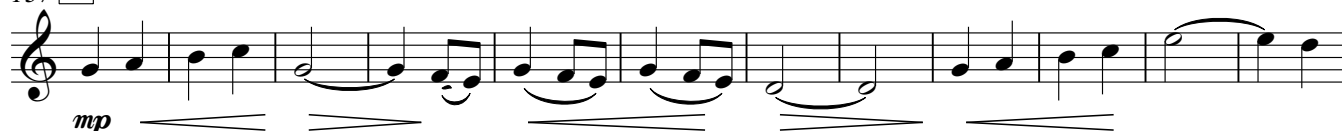
4

103 **D** ♯ = 108

115



125

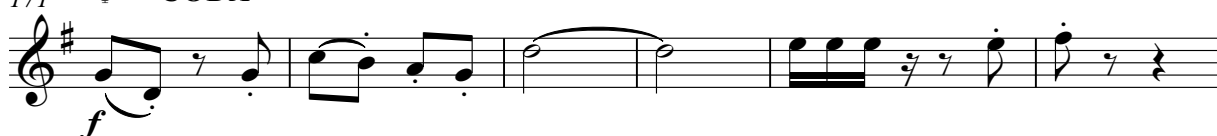
137 **E**

149



160

D.C. al Coda

171 **CODA**

177

