

THE BASSETT SUITE

1. OVERTURE - BATTENBURG

$\text{♩} = 92$

4 *legato*

f

9 **A** **2** | 1. **2** | 2. **2**

15 **B** **4** *rall.* *f legato*

2. BUTTON

$\text{♩} = 120$

f

5 **1** **Cue cornets** *mf* *p* **1**

11 **C** **9** *f*

22

3. LOG

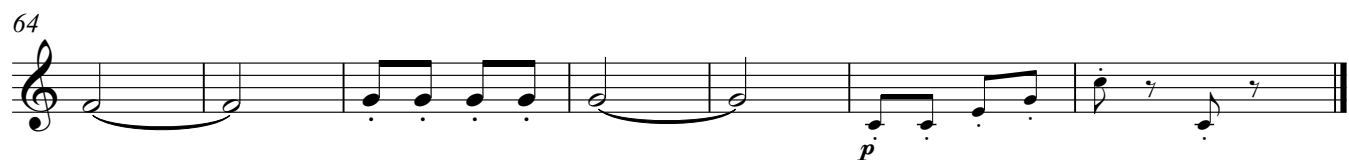
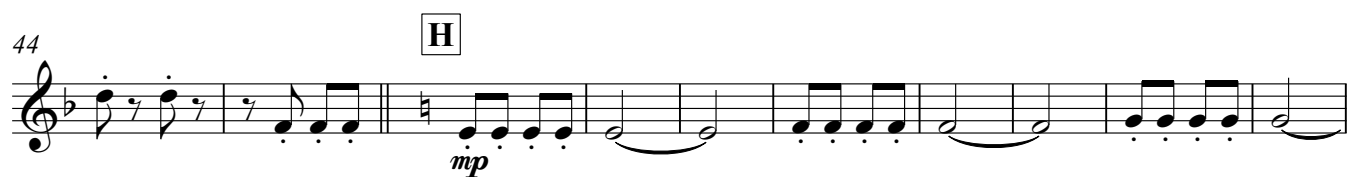
$\text{♩} = 82$

Cue Euph *p legato* **1**

8 **D** **1** **4** *pp* **1**

17 *pp* *mp* **2** *pp*

4. COCONUT ROLL



5. CUBE

♩ = 144

Musical score for 5. CUBE, 2nd Trombone part. The score consists of six staves of music in 2/4 time. It includes various dynamics (*f*, *mf*, *p*), articulations (accents), and performance markings (J, K, L).

6. BATTENBURG - POSTLUDE

♩ = 92

legato

Musical score for 6. BATTENBURG - POSTLUDE, 2nd Trombone part. The score consists of three staves of music in 4/4 time. It includes various dynamics (*f*, *p*), articulations (accents), and performance markings (M, N).