

## Bass Trombone

## Little Suite

## 1. Allegro

Allegro ♩ = 140

4

*f* **A** *f*

9

*mf* **B** *mf*

15

7

26

3

*mf*

32

12

*mf* **C**

3

*mp* *mp*

56

*p* *f* **D** *f*

61

*f*

65

*p*

68

*mf*

**E** 6 *f* 3

**F** 3 *mf*

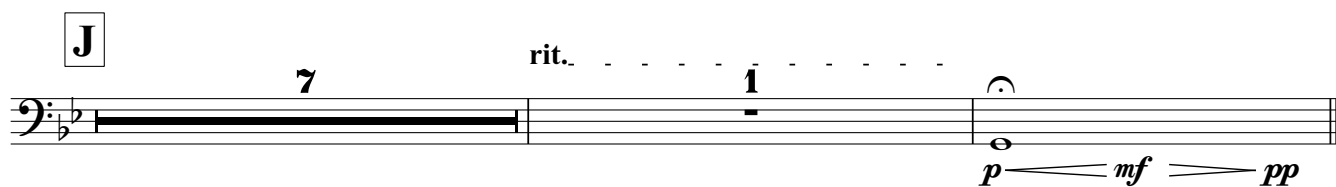
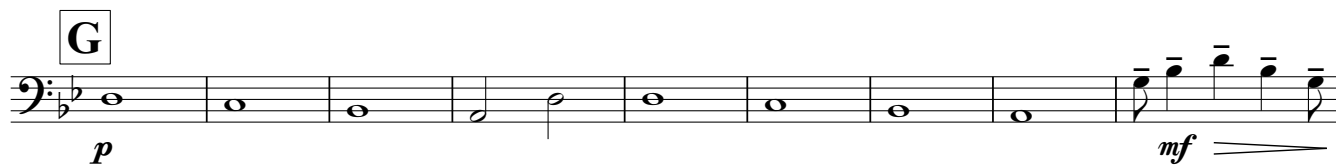
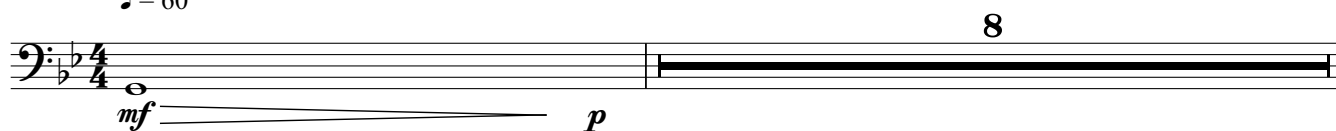
88

4 *f* *p* *ff* 1

## Bass Trombone

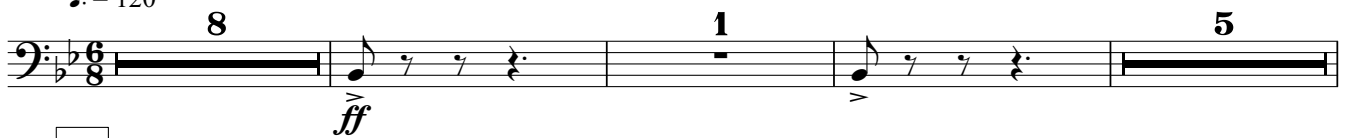
## 2. Andante

♩ = 60



## 3. Rondo

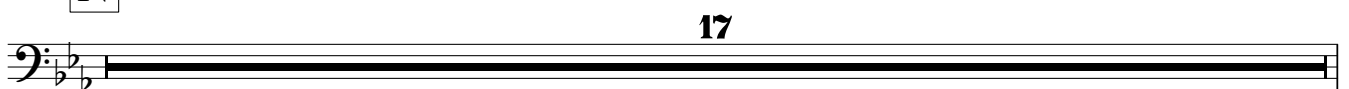
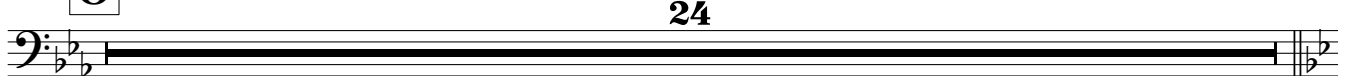
♩. = 120

**K**

34

**L**

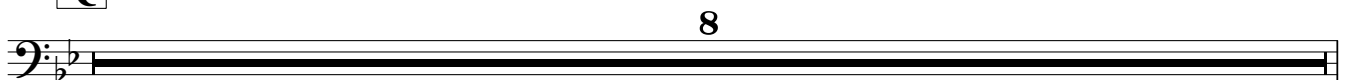
50

**M****N****O****P**

Cue solo ct.



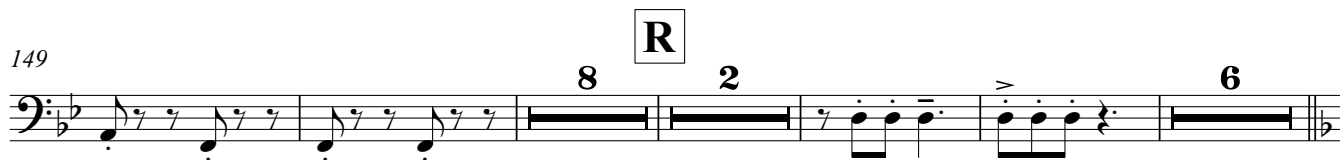
130

**Q**

143



149



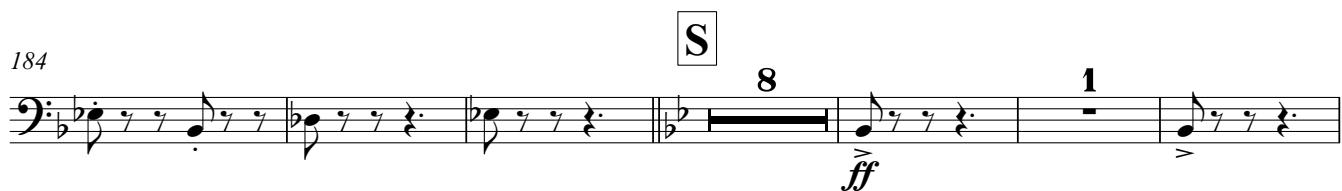
169



177



184



198



T



215



223

