

Bass Eb

MOSCOW MULE

Chris Brown

♩ = 72

1 2

p

8

A Both ♩ = 120

mp

19

23

B ♩ = 132

mp

33

ff

39

ff

46

V.S.

53 $\text{♩} = 72$

62 *p*

72 *mp* *mf*

77 **accel.**

82 **C** 3

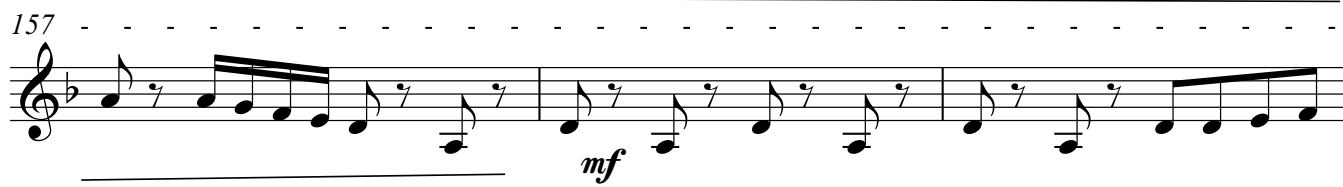
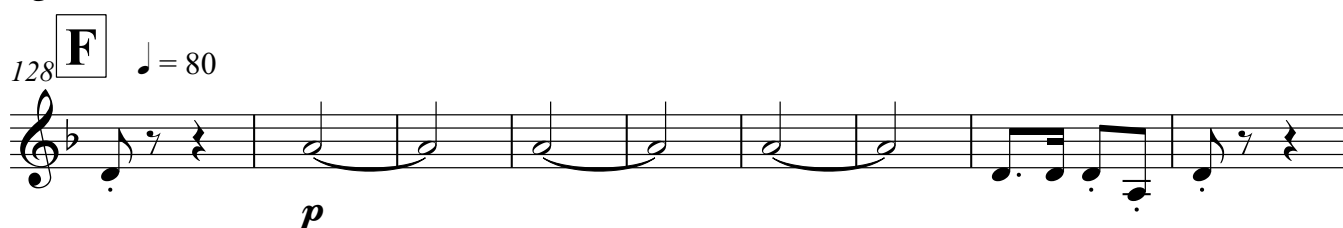
87 3 3

92

96

100 **D** $\text{♩} = 120$ *mf*

105

E

160 - - - - -



163 - - - - -



166 - - - - -



f

169



ff *mf*

$\text{♩} = 120$

172 $\text{♩} = 144$



ff

Detailed description: This block contains five staves of musical notation for a Bass Eb instrument. The first staff (measures 160-165) features eighth and sixteenth notes with rests. The second staff (measures 163-165) continues with similar rhythmic patterns. The third staff (measures 166-168) begins with a forte (*f*) dynamic. The fourth staff (measures 169-171) includes a fortissimo (*ff*) dynamic, a mezzo-forte (*mf*) dynamic, and a tempo marking of quarter note = 120. The fifth staff (measures 172-174) starts with a fortissimo (*ff*) dynamic and a tempo marking of quarter note = 144. The key signature is one flat (Bb).