

## Scrooge's Christmas

Chris Brown

$\text{♩} = 54$

*f* *p* *f* *p* *ff*

10 *p* *mp* *mp*

20 *mp* *f* *f* *ff* *mf* *rall.*

29 *f* *Hum- bug!* *Hum- bug!* *mf* *f* *ff* *Flutter*

39 (Shouted) *Bah!* *Hum- bug!* *f* *Hum- bug!* *Hum- bug!* *mf*

50 *ff* *mf* *ff* *Bah!* *Hum- bug!*

64 *mp* *mp*

74 *mp* *f* *ff* *ff* *mf* *rit.*

87 *f* *Hum- bug!* *Hum- bug!* *mf* *ff* *f* *ff* *Flutter*

97 *Bah!* *Hum- bug!* *p* *ff* *p* *ff*

113 *4* *1*

$\text{♩} = 128$

$\text{♩} = 128$

$\text{♩} = 104$

$\text{♩} = 60$

$\text{♩} = 96$

118 0-1/2  $\text{♩} = 60$

*p* *mf* *p* *p* *mf* *p* *f* 2 \*

**F**

130  $\text{♩} = 60$

*f* *p* *f* *p* *f* *p* *f* *p* 2 \* 1 *p*

144  $\text{♩} = 112$

4 \* 2 *mf* *mp* 1 *mf*

161 8 *mp* *mp* *mf*

181 *f* *mp* *mf* *mp* *mf*

194 6 *f* *mp* *mp* *mf* *mp* 1 \*

211  $\text{♩} = 144$  rall. 2 *mf*

217  $\text{♩} = 108$  **H** 1 *mf* *mp* *mf*

221 8 accel. 1 *mp* *mf* *mp* *mp*

233  $\text{♩} = 120$  *mp* *mf* *mp* *mf* *mp*

237 accel. *mf* *mp* *mf* *mp*

241  $\text{♩} = 128$  1 *mf* 2 *f*

247 **I** ♩. = 132

251



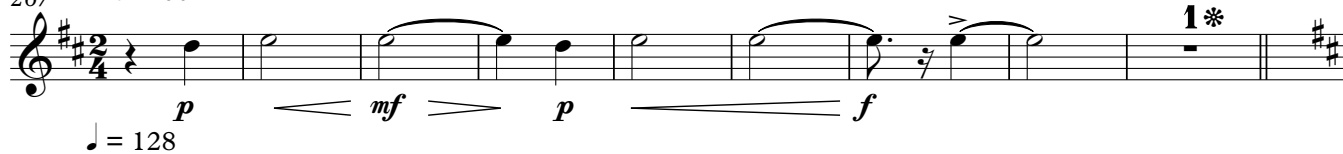
255 ♩. = 144



259 ♩ = 60



267 ♩ = 60



♩ = 128

276 **J**

288

297 **K**306 **A tempo**

314

