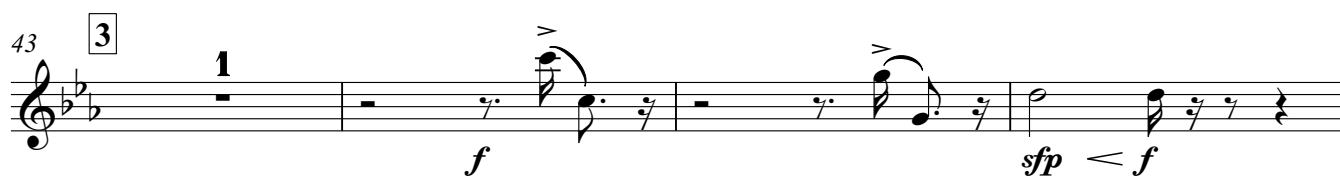


## 1st Baritone

## SPOOKY!

Chris Brown



52 4

2

*p* *mf*

57

3 *ff*

61

3

65

3

69 5

3 *f*

75

5 *p*

84 6

10 7

7

*pp* < >

Detailed description of the musical score: The score is for the 1st Baritone part, page 2. It is written in G major (one sharp) and 4/4 time. The music consists of eighth-note triplets. The first staff (measures 52-56) begins with a box containing the number 4, followed by a whole rest (labeled 2), then eighth-note triplets (labeled 3) starting on G4. Dynamics are p and mf. The second staff (measures 57-60) continues the triplet pattern, with a forte (ff) dynamic at measure 58. The third staff (measures 61-64) continues the triplet pattern. The fourth staff (measures 65-68) continues the triplet pattern. The fifth staff (measures 69-74) starts with a box containing the number 5, followed by a whole rest (labeled 3), then eighth-note triplets (labeled 3) starting on G4, with a forte (f) dynamic at measure 70. The sixth staff (measures 75-83) starts with a box containing the number 5, followed by a whole rest (labeled 5), then eighth-note triplets (labeled 3) starting on G4, with a piano (p) dynamic at measure 75. The seventh staff (measures 84-90) starts with a box containing the number 6, followed by a whole rest (labeled 10), then a box containing the number 7, followed by a whole rest (labeled 7), and ends with a half note G4 (labeled 7) and a piano piano (pp) dynamic with hairpins.